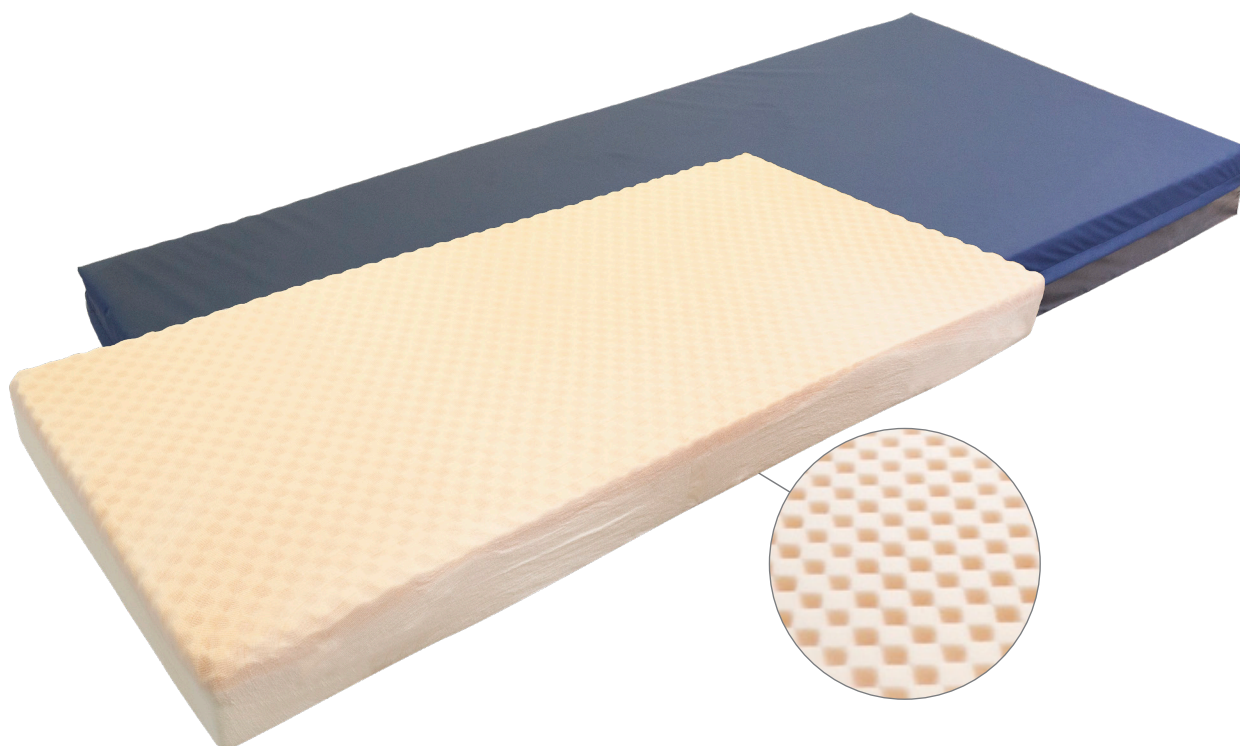




PM HEALTHCARE
— TECHNOLOGIES —

Non-Powered for Low Risk Patients **Emily Care** Series II



Key Features & Benefits:

- Multi-layered and zoned polyurethane foam construction improves pressure distribution
- Zoned polyurethane foam relieves pressure from anatomically high risk areas of the body
- High density foam provides comfort to the patient and prolongs life of the mattress
- Ultra cell, convoluted topper provides a soft supportive comfort layer with added pressure relief
- Full width topper provides a full sleeping surface
- 4-way stretch cover is fluid resistant, fire retardant, antifungal and passes antimicrobial test AATCC 30-2004
- Fire barrier sock passes CALTB133
- High density rails increase edge support and provides a stable perimeter
- Lightweight mattress design allows for ease of rotation and head to foot reversibility

FOR QUESTIONS - ORDER PLACEMENT CONTACT:

Email: info@pmhealth.us

Telephone: +1.305.857.5688 www.pmhealth.us



PM HEALTHCARE
— TECHNOLOGIES —

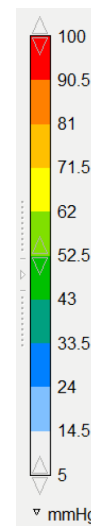
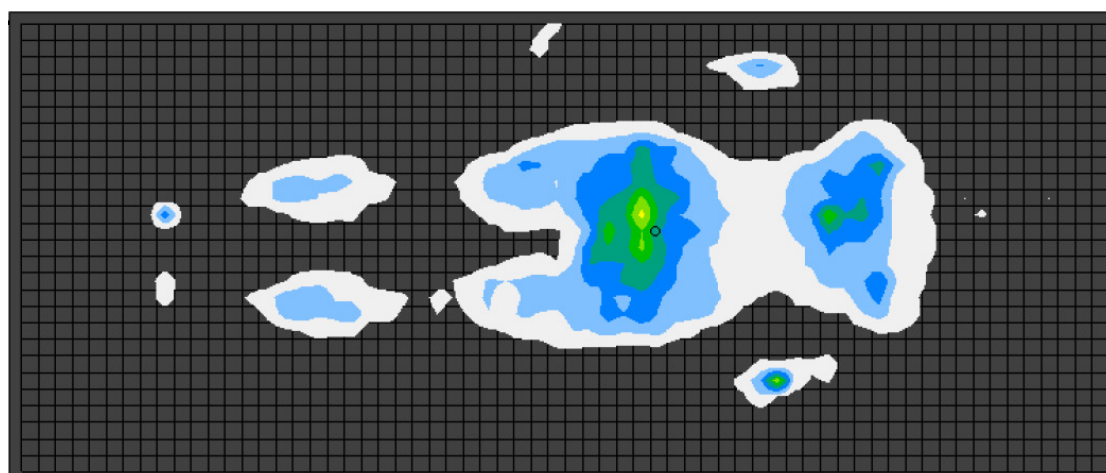
Technical Specifications

Part Numbers

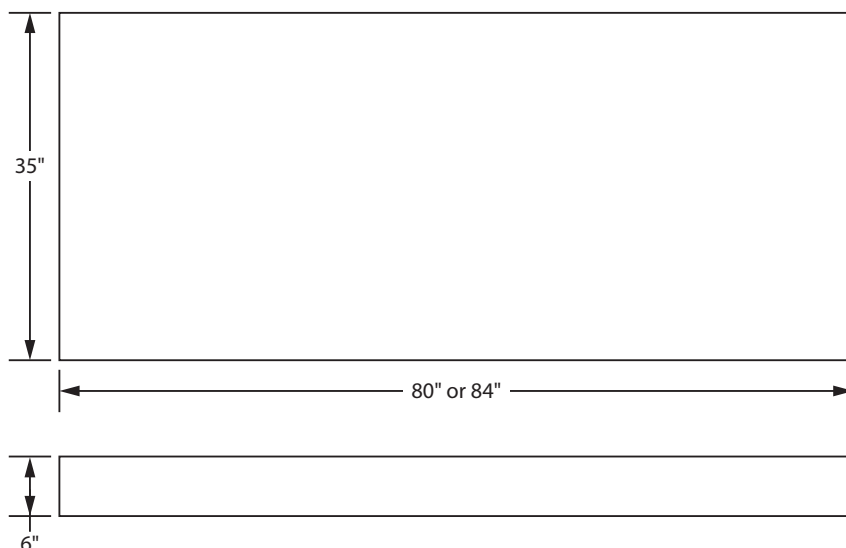
80" x 35" x 6"
84" x 35" x 6"

M-THEA-WL002-80356
M-THEA-WL002-84356

Pressure Mapping



Dimensions



*Custom sizes are available upon request

FOR QUESTIONS - ORDER PLACEMENT CONTACT:

Email: info@pmhealth.us

Telephone: +1.305.857.5688 www.pmhealth.us